

The HI 140 logger is an excellent way to conform with HACCP requirements and guarantee safety throughout the food chain

Ordering information

All the models are supplied complete with batteries and instructions.

| | |
|------------|-------------------------|
| HI 140A(H) | -30.0 to 70.0°C ±1.5°C |
| HI 140B(H) | -10.0 to 30.0°C ±0.5°C |
| HI 140C(H) | -30.0 to 10.0°C ±0.5°C |
| HI 140D(H) | 20.0 to 60.0°C ±0.5°C |
| HI 140E(H) | -30.0 to -10.0°C ±0.3°C |
| HI 140F(H) | 20.0 to 40.0°C ±0.3°C |
| HI 140G(H) | -5.0 to 15.0°C ±0.3°C |

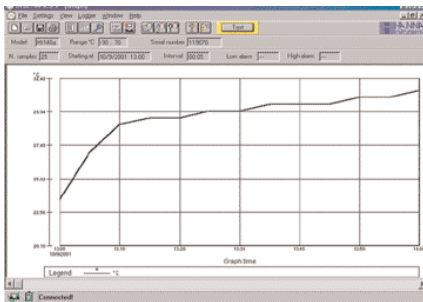
All above models come with a molded eye. For models without the hook, leave the "H" off the part number.



Accessories

| | |
|----------|-------------------------------|
| HI 90140 | Infrared cradle (transmitter) |
| HI 92140 | Windows® compatible software |

Completely user friendly - set the parameters to best fit your application



HI 140

The HI 140 dataloggers represent the most economical and secure way of monitoring temperature continuously over long periods of time. They can be placed with goods on the move, on supermarket shelves and in warehouses to act as your eyes and ears. They record the temperature at a given interval to make sure that perishable goods are not left unattended on a loading dock on the other side of the world! They can testify if fresh fish remained at unacceptable temperatures and for how long! They can provide that extra guarantee that goods never ventured off limits that public safety imposes or you regard as reasonable. HI 140 can store up to 7600 measurements at selectable intervals from 1 minute to 24 hours. All parameters can be set through our Windows® compatible software. An infrared cradle eliminates the need to put a connector on the meter - an undesirable dirt-trap in the food market and source of problems due to wear and tear over time.

Thanks to the HI 92140 software, you can import the data into Excel® and show it in clear graphic format. You can also set min. and max. levels, delayed start time, as well as a password. Should the registered temperature exceed your desired limits, a red LED on the meter will start flashing and remains so until the meter is reset by authorized personnel. This way, no one can tamper with the data. A green LED will light up the moment the HI 140 starts recording so that the operator can visibly see that the unit is working. For transport companies with several trucks, or supermarkets with multiple critical points, one can also assign a different identity number to each logger. HI 140 runs on inexpensive and readily available AA type batteries. It is completely waterproof and does not require calibration. Several types are offered so that you may choose the model with the range and accuracy most suitable for your application.

For detailed information about these products see page 08.